



SETUP GUIDE FOR UPDATING THIN MANAGER
FIRMWARE AND TERMICAP/CHANGING THE
TERMINAL MODEL FROM BOXPC138 TO
G01_SERIES

REV	MODEL	BY:	DATE
1A	BOXPC-138-G01	ALEX ORDONEZ	9/29/2017

**UPDATING THIN MANAGER
FIRMWARE AND TERMICAP/
CHANGING THE TERMINAL
MODEL FROM BOXPC-138-G00
TO G01_SERIES**

(Setup Guide)



SETUP GUIDE FOR UPDATING THIN MANAGER FIRMWARE AND TERMCAP/CHANGING THE TERMINAL MODEL FROM BOXPC138 TO G01_SERIES

REV	MODEL	BY:	DATE
1A	BOXPC-138-G01	ALEX ORDONEZ	9/29/2017

1. Download the latest [[Firmware Package](#)] and [[TermCap](#)] from Thin Manager download site.

Please note that for our G01 series model, the **TermCap must be updated to version **9.0.11** or newer and the **Firmware Package** version must be updated to version **8.1.3** or newer.**

Failed to install the latest update can cause failures.

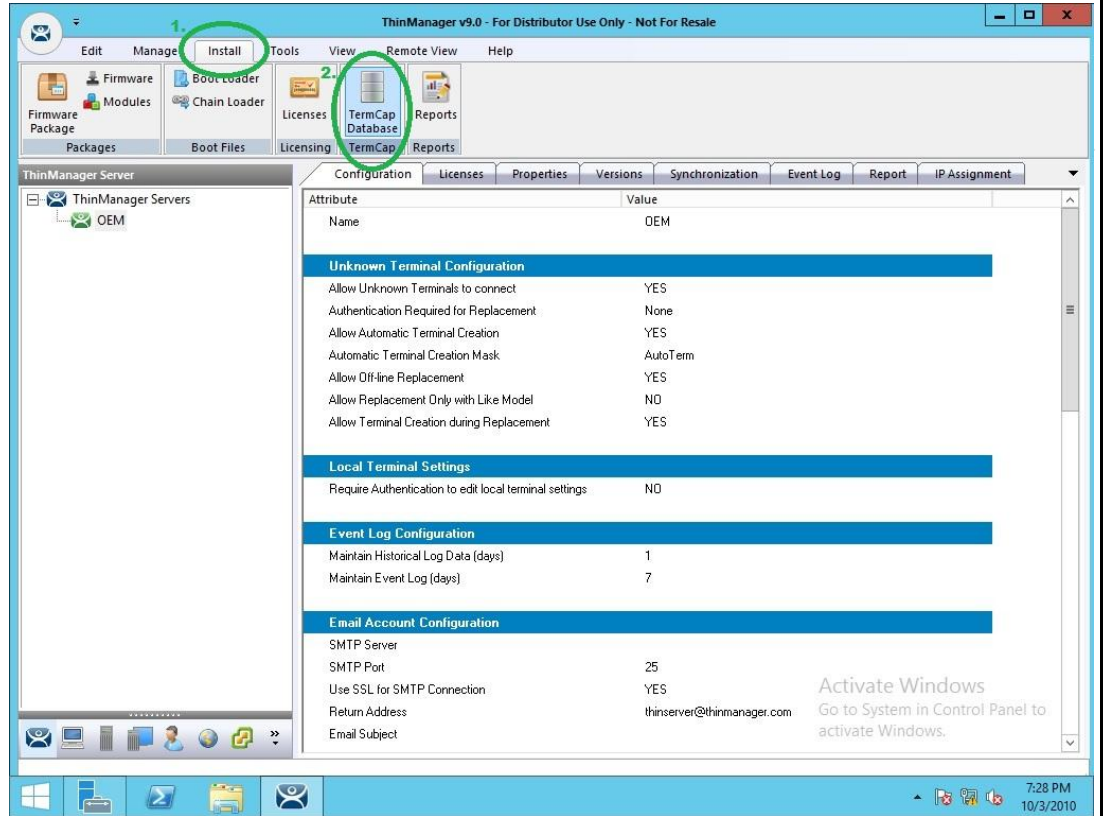
TermCap Database		
TermCap 9.0.12	9/26/2017	termcap.db.9.0.12 <small>4.4 MB - md5: 42fb74e99ad35c49bccd78e9840f3777</small>

Firmware Packages		
Firmware Package 8.1.4	8/8/2017	termpack-8.1.4.pkg <small>50.9 MB - md5: 604accee592b0484494437273bcd1d4c3</small>

SETUP GUIDE FOR UPDATING THIN MANAGER FIRMWARE AND TERM CAP/CHANGING THE TERMINAL MODEL FROM BOXPC138 TO G01_SERIES

REV	MODEL	BY:	DATE
1A	BOXPC-138-G01	ALEX ORDONEZ	9/29/2017

- From Thin Manager server, open Thin Manager program.
- Click **[Install]** then click **[TermCap Database]**

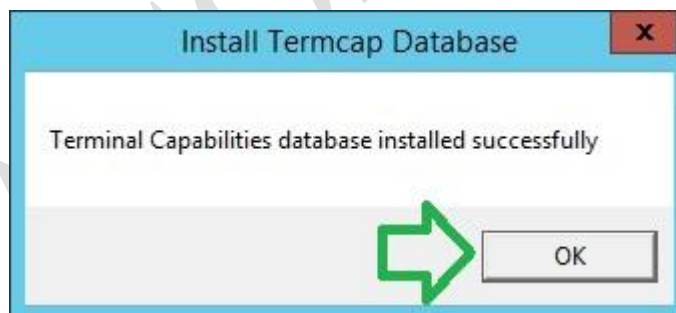
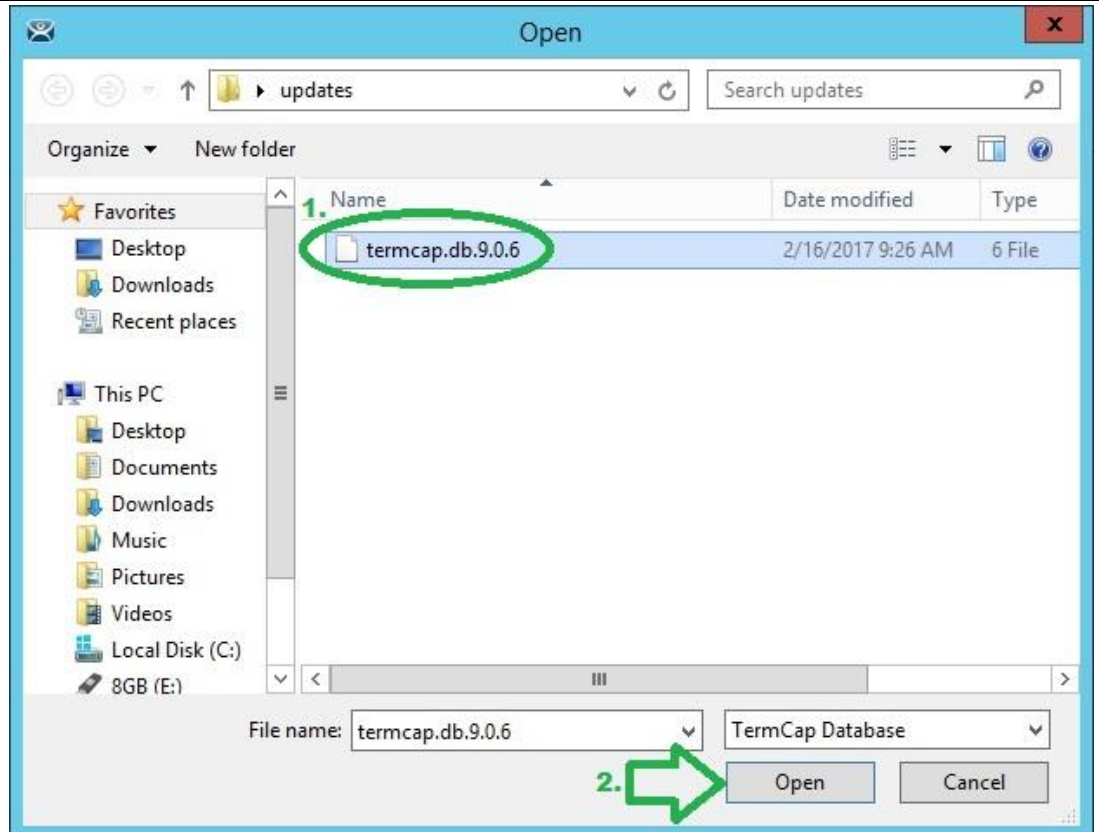


ARISTA.COM

SETUP GUIDE FOR UPDATING THIN MANAGER FIRMWARE AND TERMCAP/CHANGING THE TERMINAL MODEL FROM BOXPC138 TO G01_SERIES

REV	MODEL	BY:	DATE
1A	BOXPC-138-G01	ALEX ORDONEZ	9/29/2017

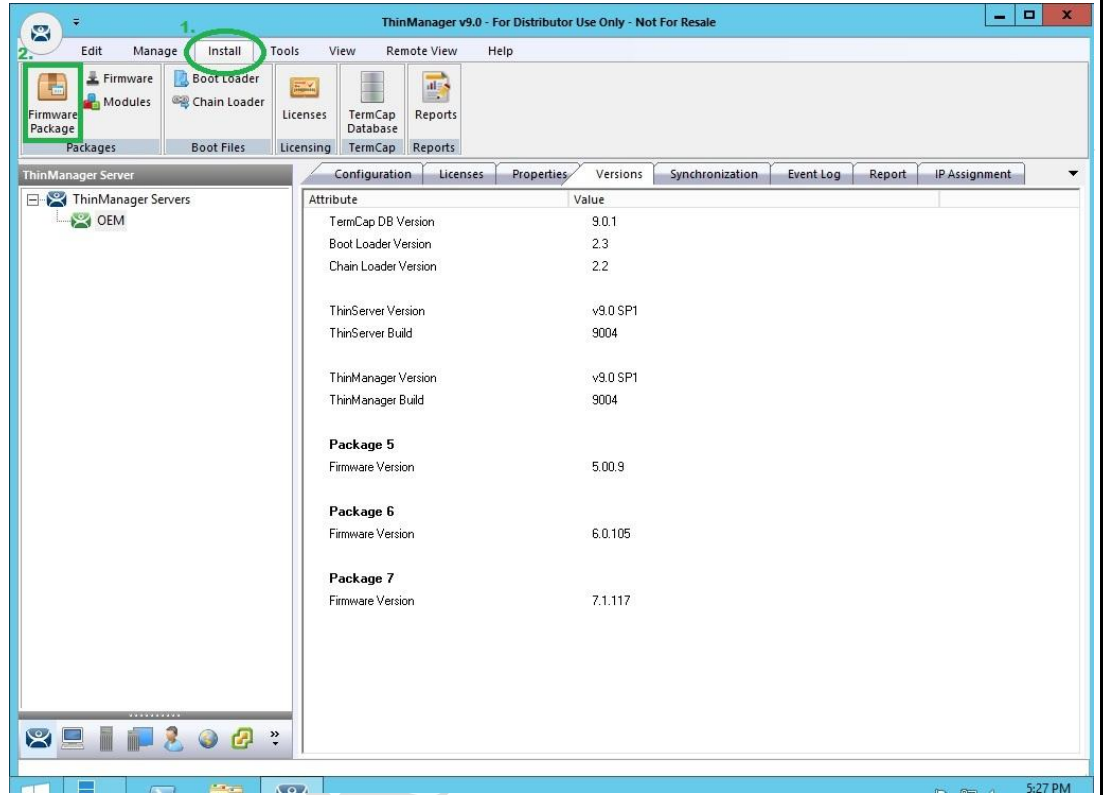
4. Locate and select [\[Termcap.db.x.x.x\]](#) that you just downloaded from Thin Manager website and click [\[Open\]](#)
5. It will then prompt you that the [\[TermCap\]](#) has been successfully installed. Click [\[Ok\]](#)



SETUP GUIDE FOR UPDATING THIN MANAGER FIRMWARE AND TERM CAP/CHANGING THE TERMINAL MODEL FROM BOXPC138 TO G01_SERIES

REV	MODEL	BY:	DATE
1A	BOXPC-138-G01	ALEX ORDONEZ	9/29/2017

6. Still from Thin Manager program, Click **[Install]** then click **[Firmware Package]**

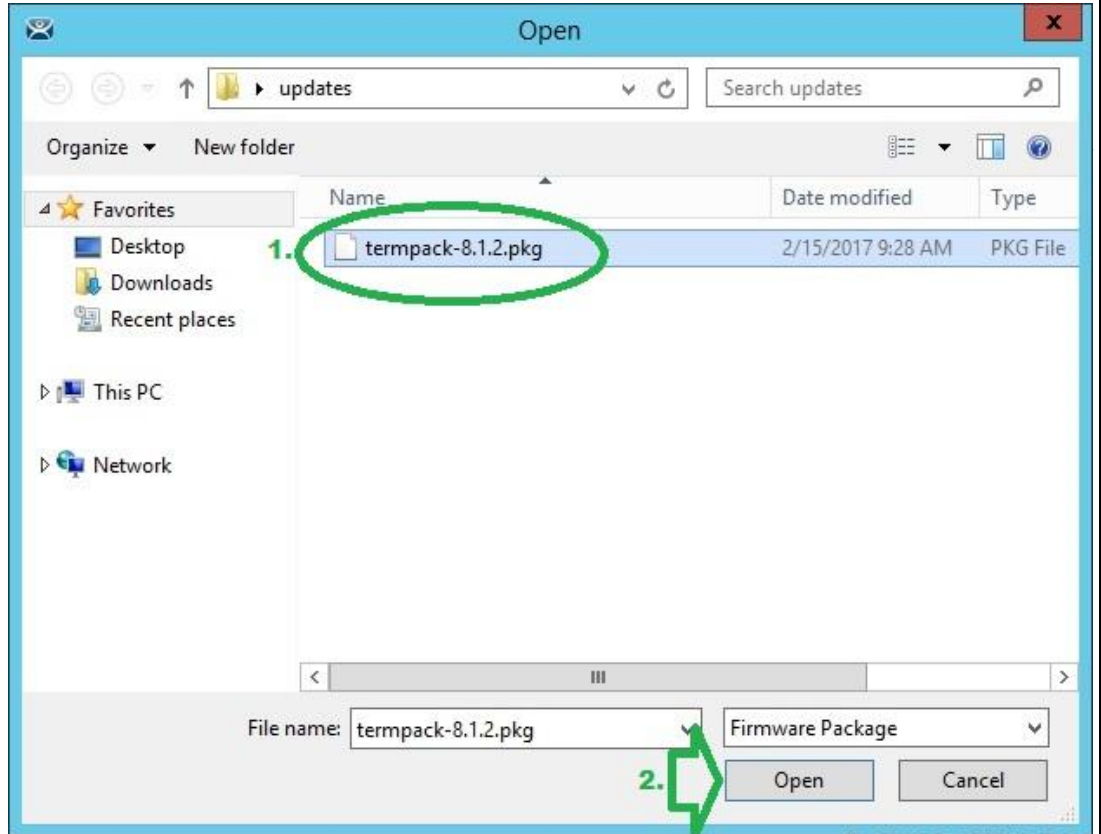


ARISTA.COM

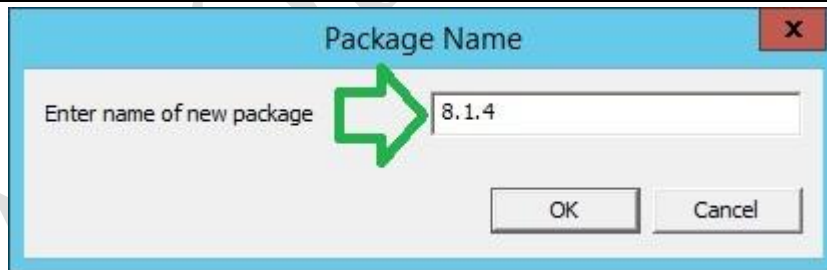
SETUP GUIDE FOR UPDATING THIN MANAGER FIRMWARE AND TERMCAP/CHANGING THE TERMINAL MODEL FROM BOXPC138 TO G01_SERIES

REV	MODEL	BY:	DATE
1A	BOXPC-138-G01	ALEX ORDONEZ	9/29/2017

7. Locate and select the Firmware Package [termpack-x.x.x.pkg] that you just downloaded from Thin Manager website and click [Open].



8. Under [Package Name], enter a name of a new package from the box and click [OK]. It will then prompt you that the Firmware Packages has been successfully installed. Click [OK].

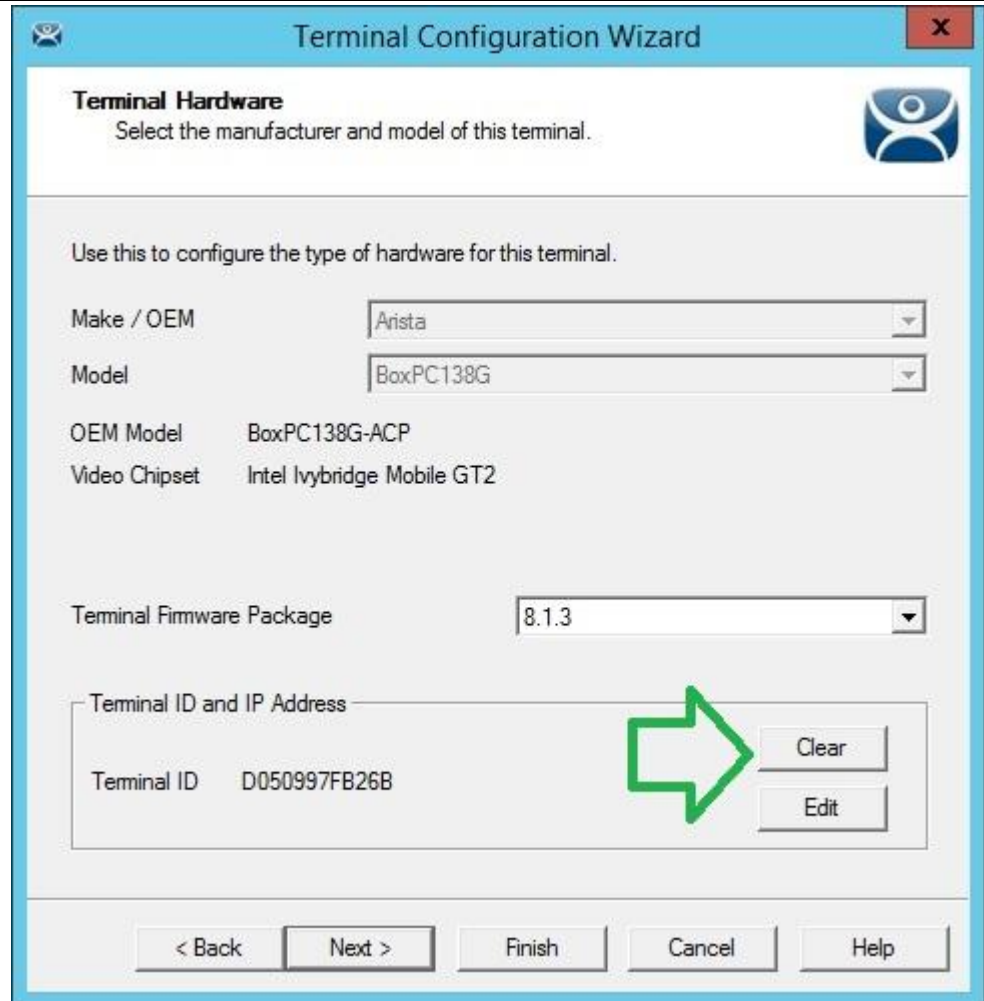


SETUP GUIDE FOR UPDATING THIN MANAGER FIRMWARE AND TERMID/CHANGING THE TERMINAL MODEL FROM BOXPC138 TO G01_SERIES

REV	MODEL	BY:	DATE
1A	BOXPC-138-G01	ALEX ORDONEZ	9/29/2017

To change the model of an existing terminal, the Terminal ID and IP address must be cleared.

- From terminals list, modify the BoxPC-138-G00 terminal and under [Terminal Hardware] page click [Clear].
- Click [OK] to confirm the clearing of the Terminal ID and IP address.



The screenshot shows the 'Terminal Configuration Wizard' window. The 'Terminal Hardware' section is active, with 'Make / OEM' set to 'Arista' and 'Model' set to 'BoxPC138G'. The 'Terminal Firmware Package' is set to '8.1.3'. The 'Terminal ID and IP Address' section shows 'Terminal ID' as 'D050997FB26B'. A green arrow points to the 'Clear' button in this section. At the bottom, there are buttons for '< Back', 'Next >', 'Finish', 'Cancel', and 'Help'.

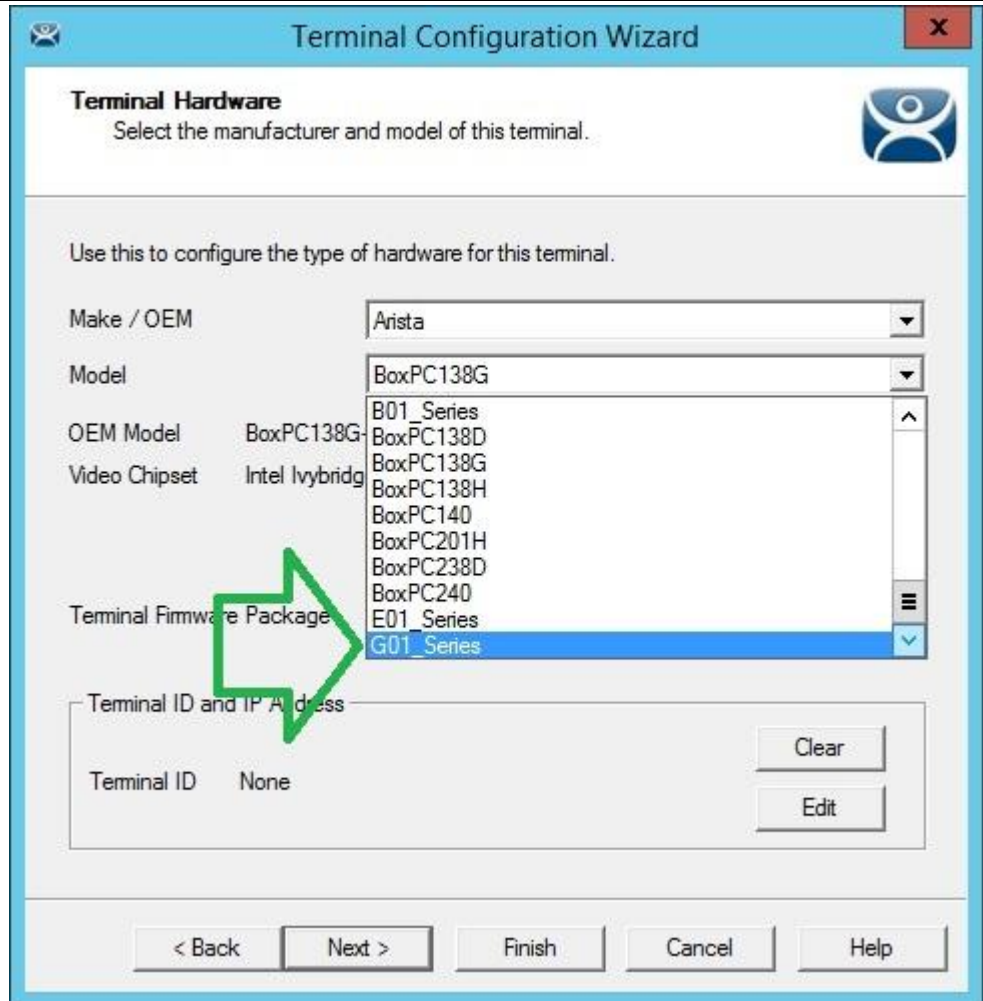


The screenshot shows a 'Clear Terminal Id' dialog box with a warning icon. The text reads: 'Clear the Terminal ID and any IP Address reservation?'. A green arrow points to the 'OK' button. There are 'OK' and 'Cancel' buttons at the bottom.

SETUP GUIDE FOR UPDATING THIN MANAGER FIRMWARE AND TERMFCAP/CHANGING THE TERMINAL MODEL FROM BOXPC138 TO G01_SERIES

REV	MODEL	BY:	DATE
1A	BOXPC-138-G01	ALEX ORDONEZ	9/29/2017

11. After clearing the Terminal ID and IP address, you can now change the model of the thin client from [BoxPC138G] to [G01_Series].



Terminal Configuration Wizard

Terminal Hardware
Select the manufacturer and model of this terminal.

Use this to configure the type of hardware for this terminal.

Make / OEM: Arista

Model: BoxPC138G

OEM Model: BoxPC138G

Video Chipset: Intel Ivybridg

Terminal Firmware Package: G01_Series

Terminal ID and IP Address

Terminal ID: None

Buttons: < Back, Next >, Finish, Cancel, Help

ARISTA

SETUP GUIDE FOR UPDATING THIN MANAGER FIRMWARE AND TERMCAP/CHANGING THE TERMINAL MODEL FROM BOXPC138 TO G01_SERIES

REV	MODEL	BY:	DATE
1A	BOXPC-138-G01	ALEX ORDONEZ	9/29/2017

12. After setting the model, be sure that the Terminal Firmware Package is set to 8 and click **[Finish]**.

Please note that the name of the Firmware Package from the screenshot will be or maybe different from the screenshot shown compared to the one configured on your server depending from the name to where you have installed the latest Firmware Package. i.e. 8, 8.1.3, 8.1.4

