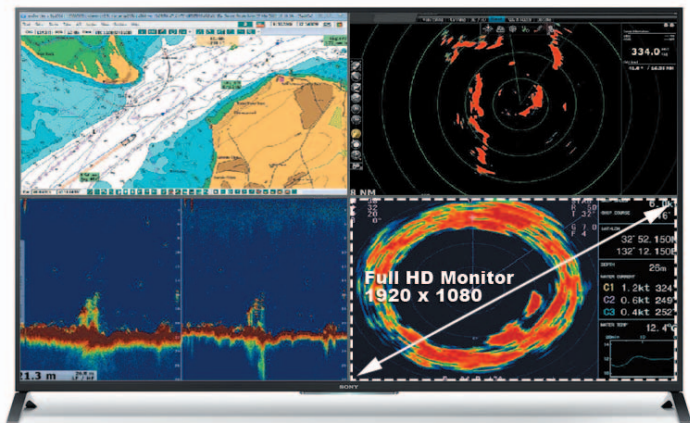


# ARD-105

## Quad HDMI 1.4b Inputs, Single HDMI 2.0 UHD output MultiViewer



### FEATURES

- Four HDMI 1.4b (4K@30Hz)input channels
- One HDMI 2.0 resolution 4K@60 (3840x2160) output
- USB KVM Switch built-in
- Control via IR, RS-232, TCP/IP
- Desktop Control Console MVD-108 is included

**View four video sources simultaneously** – the MVD-105 is a high-performance 4K UHD MultiViewer Switcher / Scaler. This MVD-105 vide processor is an ideal solution for applications where space is limited or single focal point of viewing is required. The MVD-105 overcomes these challenges through quad HDMI 1.4b inputs, single HDMI 2.0 UHD output to display four HDMI vide sources on single 4K Ultra High Definition display monitor. With 4K UHD display monitor, each display window can have up to 1920 x 1080 FHD resolutions. Instead of four individual 1080p FHD display monitors, only one 4K UHD display monitor is required which overcomes space limitation challenge and reduce installation complexity. By reducing the number of video monitors there can be large savings in energy usage and air conditioning costs as well.

**Single focal point** – Looking at multiple display monitors might be painful during long hour operation. With MVD-105 quad view video processor attached to 4K UHD display monitor; operator just needs to keep focal point on single 4K UHD display monitor instead of switching focal point back and forth among four display monitors which relieves fatigue after long hours of operations.

**Built-In USB KVM Switch** – MVD-105 has built-in USB KVM Switch for multiple computers operations. Individual keyboards, monitors and mice for multiple systems can take up a lot of room. MVD-105 integrates USB KVM to save even more space. With KVM switch you can control multiple computers with a single keyboard, mouse and display four HDMI video simultaneously on single 4K UHD display monitor. By using a single keyboard, monitor and mouse to control multiple systems a significant amount of space can be saved.

**Total Control** – The MVD-105 may be controlled via a variety of options, including LAN, RS-232, IR Remote Control. The MVD-108 Control Console puts the control of MVD-105 on your fingertip via RS-232 interface. MVD-108 Control Console enables you to switch video source of each display window, change quad view layout, switch between single and quad view, switch keyboard and mouse control on the fly.

**Advanced Audio Routing** – The MVD-105 features de-embedded audio outputs. The audio signal can be de-embedded from each HDMI video source and monitored via audio output. The audio output enables you to monitor audio from selected video source.



Specifications	AP-3500-B01
<b>Input</b>	
Video	4x HDMI (1.4b)
Resolution	3840 x 2160 @ 30Hz
HDCP	v1.4 compliant
<b>Outputs</b>	
Video	1x HDMI 2.0
Supported resolutions	3840x2160 @ 60Hz
HDCP	v1.4 compliant
Audio	1x (HDMI Embedded)
<b>USB</b>	
Upstream	4 x USB Type B connectors
Downstream	4 x USB Type A connectors
<b>Physical</b>	
Size (H x W x D)	12.60" x 10.13" x 2.02"
Net Weight	
Power Supply	110 - 240 VAC
Power Consumption (max.)	15W
<b>Control</b>	
IR Remote, Ethernet 10/100/1000 BASET, RS-232	

**MVD-105**

